

NEWSLETTER



Edition 14

Wednesday 28th January 2026

Dear Parents and Carers,

This week we were delighted to receive a letter recognising Hucknall Flying High Academy for achieving some of the strongest outcomes nationally for our pupils in 2024/25. The message highlighted the hard work of our children, the dedication of our staff and the support of the community noting that our school's success reflects high ambition and a strong commitment to ensuring every child thrives. This recognition is something our whole community can be proud of. Thank you for your ongoing support.

A message from
Bridget Phillipson



Dear Mr Clowery,

Congratulations to you and your team on the excellent outcomes' pupils at Hucknall Flying High Academy achieved at the end of the 2024/25 academic year. Your school's performance places it among the very best nationally, and this is a significant achievement.

This success reflects the dedication of your staff and the hard work of your pupils. It shows what can be achieved when ambition and commitment come together. Thank you for everything you do to give children the best possible opportunities to succeed.

Your school's achievements demonstrate what is possible, and I hope you will continue to share your experience and best practice with others. Even the strongest schools can go further. We encourage you to lead the way as a system leader - sharing effective practice, championing networks, supporting collaboration, and helping raise standards across the sector.

Please pass on my thanks and congratulations to your staff and pupils. I look forward to working with you as we strive together to raise standards for all.

Your sincerely,

Bridget Phillipson

Secretary of State for Education

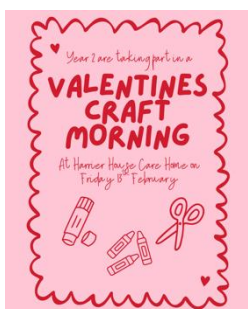
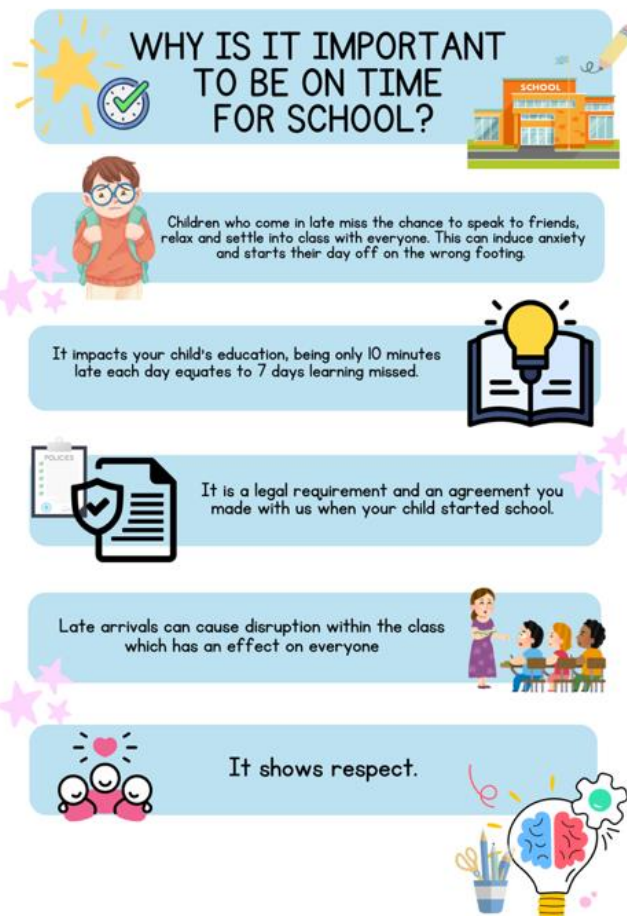
Dates – Including Holiday Dates 2026

January	
Wednesday 28th	Spitfires trip to National Space Centre
February	
Tuesday 10th	5:00pm Year 5 Parent Meeting for Hathersage residential
Friday 13th	Last day of the spring 1 term
Monday 23rd	INSET DAY – School Closed
Tuesday 24th	First day of the spring 2 term
Tuesday 24th	Year 4 trip to Bosworth Battlefield
Thursday 26th	Year 1 trip to Beaumanor Hall
Friday 27th	Year 6 trip to the Holocaust Museum
March	
Wednesday 4th	Year 5 depart for Hathersage residential
Friday 6th	Year 5 return from Hathersage residential
Tuesday 10th	Parent Meetings: 3:30pm – 6:30pm
Wednesday 11th	Parent Meetings: 3:30pm – 6:30pm
Wednesday 18th	2:30pm – Rocksteady Concert
Friday 27th	Last day of the spring 2 term
April	
Monday 13th	First day of the summer 1 term
Monday 13th	Year 3 trip to Creswell Crags
Tuesday 21st	Year 4 trip to Leicester Museum & Art Gallery
May	
Monday 4th	BANK HOLIDAY – School closed
Monday 11th	Key Stage 2 SATS Week
Thursday 21st	Last day of the summer 1 term
Friday 22nd	INSET DAY – School Closed
June	
Monday 1st	First day of the summer 2 term
Monday 1st	Year 4 multiplication Check Week
Monday 8th	Phonics Screen Week
Tuesday 30th	Year 6 depart for Wales residential
July	
Friday 3rd	Year 6 return from Wales residential
Wednesday 15th	2:30pm – Rocksteady Concert
Friday 17th	School reports
Friday 24th	Last day of summer 2 term

The Importance of School Attendance

Working in partnership with our families is central to creating a nurturing and successful learning environment for every child. One area where this collaboration has a particularly powerful impact is punctuality. Regular attendance and arriving at school on time are essential habits that shape a child's confidence, readiness to learn, and overall achievement.

To help families strengthen these routines, Mrs. Dempsey, our Family Support Worker, has created a clear and informative leaflet offering practical guidance and useful strategies. We hope you find it supportive as we continue working together to ensure every child gets the best possible start each day.



Year 2 Craft Morning

We are excited to share that Year 2 will be going over to our neighbours at Harrier House Care Home for a Valentines Craft morning on **Friday 13th February**. We are sure this will be a lovely occasion for both the children and residents.

Year 3 Enquiry Showcase

Just a little reminder for our Enquiry Showcase for **Year 3** parents this **Thursday (29th January) at 2.30pm!**

If you have any unwanted clothes, blankets or toys we would appreciate your donations. These will be taken to the British Red Cross charity shop by the children. We chose this charity as they help countries in need during any natural disasters.



Best wishes,

Mr K Clowery

